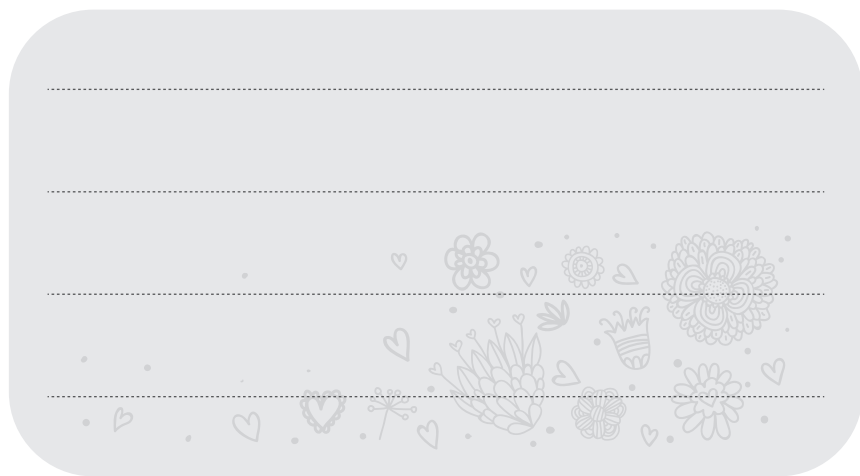


*Este libro pertenece a:*



A decorative rectangular box with rounded corners, containing four horizontal dashed lines for writing. At the bottom of the box, there is a floral pattern featuring various flowers, hearts, and a butterfly.



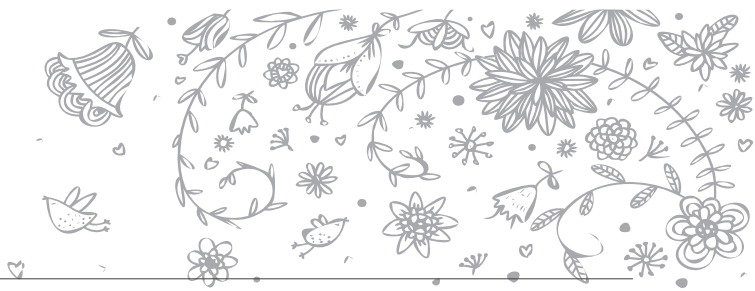
Fecha: \_\_\_\_\_



A series of horizontal lines for writing, starting from the first line below the date and ending at the line above the bottom border.



Fecha: \_\_\_\_\_



A series of horizontal lines for writing, starting from the first line below the date and ending at the line above the bottom border.

